



Engineering Concept for Contracting L.L.C
المفهوم الهندسي للمقاولات الانشائية ذ.م.م

JORDAN – AMMAN - KHALDA
AMER BIN MALEK ST., BUILDING
NO. 32

TEL: +962 795642938

EMAIL: INFO@CONCEPCO.COM

<https://goo.gl/maps/BSK9ja7MPbc88k2L6>



QUALITY POLICY

ECC's Quality Policy is to ensure that all works on their current and future projects are supplied, installed, constructed and tested and maintained in accordance with the client's requirements, as stated in Contract Documents.

ECC shall implement throughout all their operation an effective and efficient quality program, planned and developed with other management functions assuring compliance with ISO 9001:2015.

The company's quality plan describes the quality system that is to be used on each project and is in line with their above stated company policy for quality.

The quality plan refers to all the relevant aspects for design and engineering, procurement, planning, administration, installation and testing from design for each project up to final hand over.

Specific procedures, such as quality management procedures (Q. M. P.'s), quality control procedures (Q. C. P.'s), project control procedures (P. C. P.'s), inspection and test plans (I. T. P.'s) and method statements will be developed and implemented to ensure that all quality aspects of the work on each project and throughout the company, are addressed.

GENERAL MANAGER



Building 29, Amer Ben Malak St.
Khalda - Amman 1198 Jordan
Mobile : +962 7 9564 2928
Mobile : +962 7 7987 1324
Email : info@conceptco.com

COMPANY EHS & ENVIRONMENTAL MANAGEMENT POLICY

The policy of ENGINEERING CONCEPT FOR CONTRACTING L.L.C, is that its operation (Construction of electromechanical projects) are executed at all times by trained and competent personnel in such a way as to ensure, so far as is reasonably practicable, the health, safety and welfare of all its employees and all persons likely to be affected by its operations.

The company is committed to providing a safe working and living environment by the company management playing an active role in the safe execution of its responsibilities. The company management achieves this through the planning, setting objectives, design, implementation and review of all work in which they are involved.

The Health and Safety procedures are designed to minimize the risks of falling and safety and health risks in ECC projects.

The prevention of all accidents involving personal injury or property damage as well as ill health is essential to the culture and operations of ENGINEERING CONCEPT FOR CONTRACTING L.L.C

The Company Health & Safety Management System meets the requirements of OHSAS 45001:2018 and Environmental Management ISO 14001:2015 and complies with relevant local government legislation and regulations and caters for client requirements and is disseminated to all the employees and other interested parties.

General Manager



Building 29, Amer Ben Malak St.
Khalda - Amman 1198 Jordan
Mobile : +962 7 9564 2928
Mobile : +962 7 7987 1324
Email : info@conceptco.com

COMPANY QUALITY POLICY

COMPANY EHS & ENVIRONMENT POLICY





ISO CERTIFICATES



Date: 2/10/2019

To whom it may concern;

Engineering Concept for Contracting Company L.L.C has worked as our subcontractor in (2X235MW Attarat Oil Shale Power Plant-Jordan Project Civil & Installation of Pumping House Engineering Contract), in terms of electromechanical installations.

They performed their obligations in a timely and professional manner and provided an outstanding contribution and was at full cooperation in terms of quality assurance and EHS requirements.

Sincerely;

Sameeh Amro

شركة احمد يوسف الطراونة وشركاه ذ.م.م
AMMAD YOUSSEF
AL-TARAWNEH
AND PARTNERS

عنوان 11181 جبل عمان-الدوار الثاني 840500 ص.ب هاتف +962 6 5811544 فاكس : +962 6 5811577
Fax: +962 6 5811577 P.O.Box: 840500 Amman 11181 Jordan Tel.: +962 6 5811544
E-mail : info@yaltarawneh.com website: www.yaltarawneh.com



AL- Muhandes Cont. Co. Ltd.

شركة المهندس للمقاولات (ذ.م.م)

Num : 161/2019ع

Date: 06/10/2019

To whom it may concern

Engineering concept for contracting company L.L.C has worked as our subcontractor in (first insurance Headquarter project) in terms of MEP works.

They performed their obligations in a timely and professional manner and provided an outstanding contribution and was at full cooperation in terms of quality assurance and EHS requirements.

Sincerely;

General Manager

Eng. Salim Hamdan
شركة المهندس للمقاولات (ذ.م.م)
AL- Muhandes Cont. Co. Ltd.

Tel: +9626 - 5354332 - Fax: +9626 - 5671441 - Mobile: +9627-95885550 - E-Mail: cont@almuhandes.com
P.O Box. 82, Jbailha (11941) Amman / Jordan



Date: 2/10/2019

To whom it may concern;

Engineering Concept for Contracting Company L.L.C has worked as our subcontractor in (Rehabilitation and Extension of Industrial Terminal in south port project) in terms of electrical installations & cathodic protection works.

They performed their obligations in a timely and professional manner and provided an outstanding contribution and was at full cooperation in terms of quality assurance and EHS requirements.

This certificate is given to them upon their request without bearing any responsibility.

Sincerely;
PHB
TECNICAS REUNIDAS
WESSERBÜTTE
UTE TR. DUB. JORDAN
PROJECT: REHABILITATION AND EXTENSION OF THE INDUSTRIAL
TERMINAL IN THE SOUTH PORT IN AQABA
Ramon Fernandez

UTE TR PHB JORDAN

Rehabilitation and Extension of the Industrial Terminal in South Port (Aqaba)

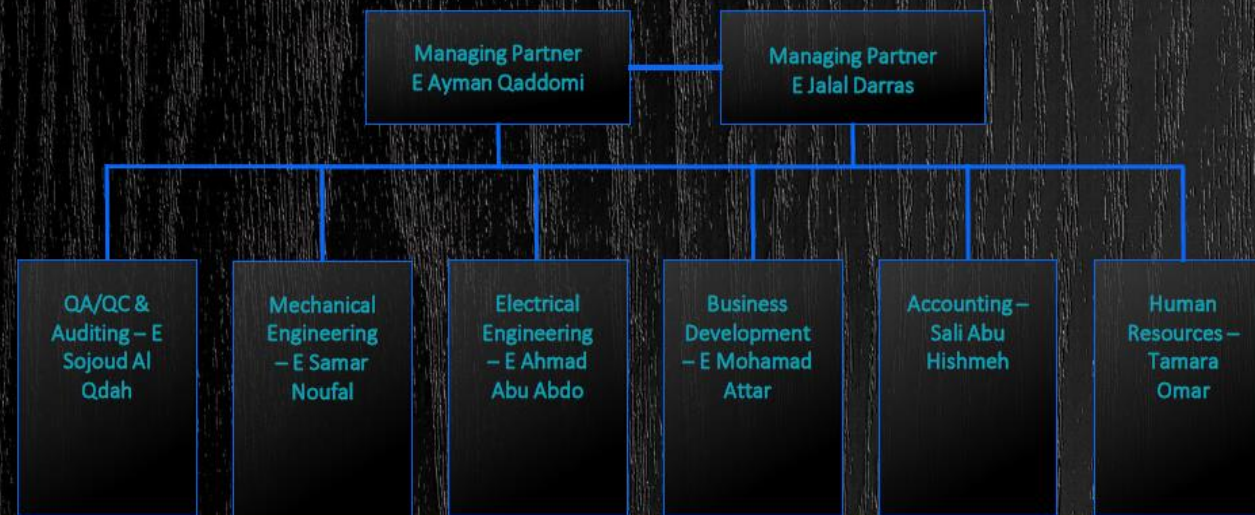
Tala Bay - Block 9, C 4

Aqaba 77110 - Jordan

RECOMMENDATION LETTERS



ORGANIZATIONAL CHART



COMPANY ORGANIZATIONAL CHART

INTERNATIONAL CLIENTS LIST



INTERNATIONAL CLIENTS LIST



Project	Year	Scope
First Insurance Co " Solidarity " Headquarters MEP Works	2018	Complete MEP Works
CO WATER Clinics & Schools Photovoltaic Systems	2018	Installation of 120 KWp solar systems in various locations
2X235 MW Oil Shale Power Plant, Raw Water System Electromechanical Works	2019	Installation of transfer pumps for 9 Nos.water wells, piping works, electrical and I&C and earthing works
Aqaba Industrial Ports Main & Existing Jetties Cathodic Protection Works	2019	Installing of transformer rectifiers, cable trays, cabling & terminations and negative bonding for underwater piles.



PROJECTS

IMPLEMENTED SYSTEMS

- EARTHING SYSTEM
- CABLE TRAYS INSTALLATION
- ICCP CATHODIC SYSTEM
- CABLE PULLING & TERMINATION
- TRANSFORMERS INSTALLATION
- RACEWAYS
- INSTRUMENTATION
- HEAT TRACING
- LIGHTENING PROTECTION
- LIGHTING SYSTEMS
- MECHANICAL WORKS

2020/2021 Ongoing Projects			
Project	Al Eman Hospital	ASTTP LPG 3 Spheres Extension	APC Dispatching Project
Main Contractor	Al Muhandes Engineering	MID-OHL JV	Al-Oun Advanced Co.
Scope	MEP Works	Electrical & Instrumentation	Complete Electrical and I&C
Briefing	Installation Sub-contractor	Installation Sub-contractor	Installation Sub-contractor
	All MEP & Low current systems, earthing, power centers, HVAC, LPG, Steam, piping works, pumps & LPG Boilers network, complete cabling & BMS.	Complete electrical & instrumentation works, cathodic protection for 3 spherical LPG Tanks in addition to lighting, CCTV and others.	Complete electrical & automation works for 5 Nos Conveyor belts along with related materials engineering & supply.



Project	Samra Combined Cycle Power Plant-Phase I for (GAMA)	Samra Combined Cycle Power Plant-Phase II for (SEPCO III)	Qatrana Cement Factory / Generation Units
Employer	SAMRA POWER COMPANY	SAMRA POWER COMPANY	QATRANA CEMENT
Main Contractor	Black & Veatch - GAMA JV	SEPCO III	WARTSILA
Scope	Electrical & Instrumentation	Electrical & Instrumentation	Complete Electromechanical and I&C
Year	2007	2009	2010
Value	11,000,000	7,600,000	5,500,000
	Installation Sub-contractor	Installation Sub-contractor	Installation Sub-contractor
Briefing	Electro-Mechanical installation of a complete combined cycle power plant of 300MW capacity comprising two GE frame 9E gas turbines. Two heat recovery steam generators, steam turbine and generator, air cooled condenser, water treatment plant, all electrical systems including 400KV step up transformers, control centers, DCS system, cabling and raceways	SAMRA II Combined Cycle including Boilers , Steam Turbine Building. Electro-Mechanical works Consist of Fire Fighting and fire Alarm System Mechanical Piping, Painting, Insulation, Plumbing, HVAC and Electrical Erection Works and all I&C Works	Complete Electro-Mechanical Erection Works including supply and Fabrication of Tanks for 7x7MW Diesel Power Plant for Cement Factory at Qatrana.



PREVIOUS EXPERIENCE OF THE MANAGEMENT

POWER PLANTS FIELD

Systems

Cable Trays & Raceways
 Cable Pulling
 Terminations
 MV cabling & Terminations
 Earthing & Lightning Systems
 Busducts
 Turbines Assembly
 High Energy Piping
 Instruments & Hook-Ups
 Installation
 Switchgears & Power Centers
 Installation
 Heat Tracing
 Fabrication & Welding
 Hazard/ATEX accessories
 Heavy Ducting
 Fire Fighting & Detection
 Piping Works
 Steel Structure
 Testing & Commissioning
 ICCP Cathodic Protection
 Pumps Installation
 Motors Alignment
 Scaffolding
 Equipments Installation
 Lighting Systems
 CCTV, Intrusion & Security
 Systems
 Transformers
 Transformer Rectifiers
 Aviation Lighting



Project	IPP4 , AL-Manakher Power Plant	Qatrana Power Station for (LOTTE)	SAMRA III ADD-ON COMBINED CYCLE POWER PLANT	PP13 POWER PLANT RIYADH-KSA
Employer	AES LEVANT HOLDINGS	KOSPO	SAMRA POWER COMPANY	SAUDI ELECTRICITY COMPANY
Main Contractor	WARTSILA	LOTTE	METKA	GAMA
Scope	Complete Electromechanical and I&C	Complete Electromechanical and I&C	Complete Electromechanical and I&C	Mechanical Works
Year	2011	2012	2014	2017
Value	12,000,000	8,000,000	2,600,000	11,400,000
	Installation Sub-contractor	Installation Sub-contractor	Installation Sub-contractor	Installation Sub-contractor
Briefing	Structural Steel for Buildings, Including Power Houses, Administration and Workshop Buildings, Stacks, Ventilation Fans, HVAC and Electro-Mechanical Services. Complete Electro-Mechanical Erection Work for 280MW (16 Gensets x 17.5MW) Tri-Fuel Power Plant, including all Equipment Piping, Insulation, Painting, Electrical and Control Erection and Testing Works for the biggest Tri-Fuel Plant in the World.	Mechanical erection for combined cycle power plant (370 MW) consisting of two gas turbine, two boilers and one steam turbine and all related balance of plant equipment. Design and detail engineering, construction and commissioning of fire protection and detection systems and HVAC and complete I&C works	All Electrical Systems including 400KV step up transformers, Control Centers, Cabling and Raceways and instrumentations	Erection of two Air Cooled Condenser (42 Fans) (Units 18 and 28) including all Electro-Mechanical, Equipment and Steel Structure works related to the PP13 – Power Plant and Fabrication, Welding and Installation of High Energy Piping Works including NDE, PWHT and Hydro-testing.



PREVIOUS EXPERIENCE OF THE MANAGEMENT

POWER PLANTS FIELD

Systems

Cable Trays & Raceways
 Cable Pulling
 Terminations
 MV cabling & Terminations
 Earthing & Lightning Systems
 Busducts
 Turbines Assembly
 High Energy Piping
 Instruments & Hook-Ups
 Installation
 Switchgears & Power Centers
 Installation
 Heat Tracing
 Fabrication & Welding
 Hazard/ATEX accessories
 Heavy Ducting
 Fire Fighting & Detection
 Piping Works
 Steel Structure
 Testing & Commissioning
 ICCP Cathodic Protection
 Pumps Installation
 Motors Alignment
 Scaffolding
 Equipments Installation
 Lighting Systems
 CCTV, Intrusion & Security
 Systems
 Transformers
 Transformer Rectifiers
 Aviation Lighting



Project Name	ALNG , Aqaba Liquefied natural gas Terminal	IPP3 GAS INFRASTRUCTURE SYSTEM- JORDAN	AOT and ALPG storage tanks terminal
Employer	AQABA LNG TERMINAL CORPORATION	WARTSILA / KEPCO	CDIG – China
Main Contractor	BAM/MAG JV	WARTSILA	CDIG
Scope	Complete Electromechanical and I&C	Complete Electromechanical and I&C	Electrical & Instrumentation
Year	2015	2015	2016
Value	65,000,000	1,600,000	900,000
	EPC Contractor	Installation Sub-contractor	Installation Sub-contractor
Briefing	Design and construction of an LNG Jetty with approach Trestle, including the required Electro-Mechanical Services and Metering System, for handling the LNG from FSRU to the tie in point. In addition to Buildings, Infrastructure and Landside Civil Work.	All Civil, Electrical, Piping and Equipment Installation Works related to IPP3 Gas Infrastructure System Project.	All I&C Works related to the tanks including cable trays and cabling, instrumentation and testing & commissioning.



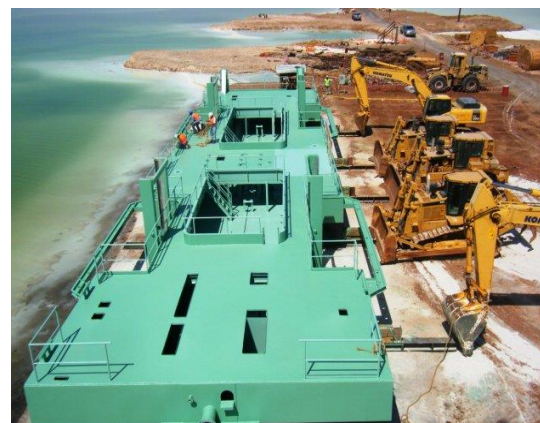
PREVIOUS EXPERIENCE OF THE MANAGEMENT

OIL & GAS FIELD

Systems
Cable Trays & Raceways
Cable Pulling
Terminations
Earthing & Lightning Systems
Instruments & Hook-Ups Installation
Switchgears & Power Centers Installation
Heat Tracing
Fabrication & Welding
Hazard/ATEX accessories
Fire Fighting & Detection
Fire & Gas systems
Piping Works
Steel Structure
Testing & Commissioning
ICCP Cathodic Protection
Pumps Installation
Motors Alignment
Scaffolding
Equipments Installation
Lighting Systems
CCTV, Intrusion & Security Systems
Transformer Rectifiers
Pin Brazing



Project Name	Second Compaction Circuit at Arab Potash Company	ARAB POTASH COMPANY-HARVESTERS 5/6/7/8/9/10/11/12	Jordan Bromine Company – Petra Bromine Expansion Project Phase II
Employer	ARAB POTASH COMPANY	ARAB POTASH COMPANY	JORDAN BROMINE COMPANY
Main Contractor	MAG ENGINEERING	FLSMIDTH	MAG ENGINEERING
Scope	Complete Electromechanical and I&C	Complete Electromechanical and I&C	Complete Electromechanical and I&C
Year	2016	2008-2013	2010
Value	6,000,000	11,000,000	2,300,000
	EPC Contractor	Installation Sub-contractor	EPC Contractor
Briefing	Mechanical Equipment Installation with its related Electrical and I&C Works. Steel Structure Works, Civil Works, Fabrication and Welding.	Electrical Work, Fabrication and Equipment Erection and Instrumentation Works for 8 Nos harvesters for APC in AlSafi – Jordan and Floating Pipeline.	Electro-Mechanical Equipment Erection including Piping and Instrumentation for Phase 2 of Petra Expansion.



PREVIOUS EXPERIENCE OF THE MANAGEMENT

MINING FIELD

Systems

Cable Trays & Raceways
 Cable Pulling
 Terminations
 MV cabling & Terminations
 Earthing & Lightning Systems
 Instruments & Hook-Ups
 Installation
 Switchgears & Power Centers
 Installation
 Heat Tracing
 Fabrication & Welding
 Hazard/ATEX accessories
 Fire Fighting & Detection
 Piping Works
 Steel Structure
 Testing & Commissioning
 ICCP Cathodic Protection
 Launching
 Floating Pipe Lines
 GRP Piping
 Pumps Installation
 Motors Alignment
 Scaffolding
 Equipments Installation
 Lighting Systems
 CCTV, Intrusion & Security
 Systems
 Transformers
 Transformer Rectifiers
 Aviation Lighting



Project Name	Disi Water Conveyance System
Employer	DIWACO
Main Contractor	GAMA
Scope	Complete Electromechanical and I&C
Year	2013
Value	7,500,000
	Installation Sub-contractor
Briefing	Pumping station at Madaba, Dabouk Reservoir Site and Abu Alanda Reservoir Site. Mechanical, Electrical and Civil Works related to Conveyance Pumps, Piping, Flow Control Station, Chlorination System, Switchgear (MV & LV), SCADA, Instrumentation, Cable Raceways, Cables and Valve Chambers.



PREVIOUS EXPERIENCE OF THE MANAGEMENT

WATER FIELD

Systems
Cable Trays & Raceways
Cable Pulling
Terminations
Earthing & Lightning Systems
Instruments & Hook-Ups
Installation
Switchgears & Power Centers
Installation
Fabrication & Welding
Fire Fighting & Detection
Piping Works
Steel Structure
Testing & Commissioning
ICCP Cathodic Protection
GRP Piping
Pumps Installation
Motors Alignment
Scaffolding
Equipments Installation
Lighting Systems
CCTV, Intrusion & Security
Systems
Transformer Rectifiers
Pin Brazing





COMPLETED PROJECTS

UM AL-HIRAN HOSPITAL MAIN WATER TANK

SCOPE

SUPPLY & INSTALLATION OF 500 CUBIC
METERS GRP WATER TANK WITH BASE .





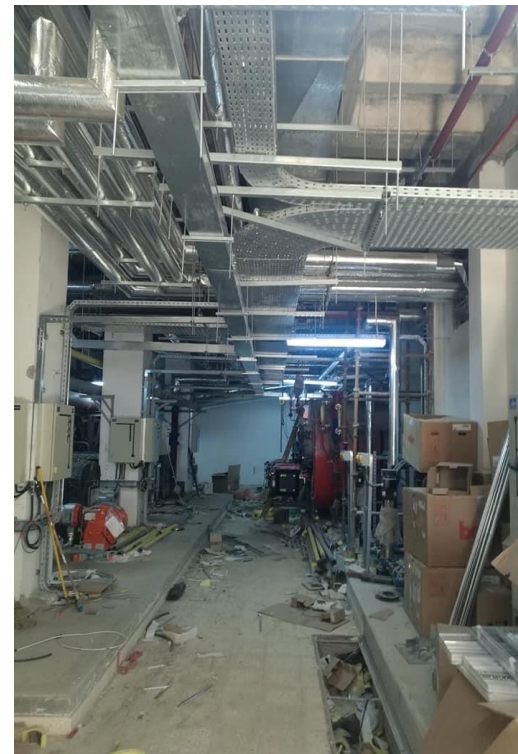
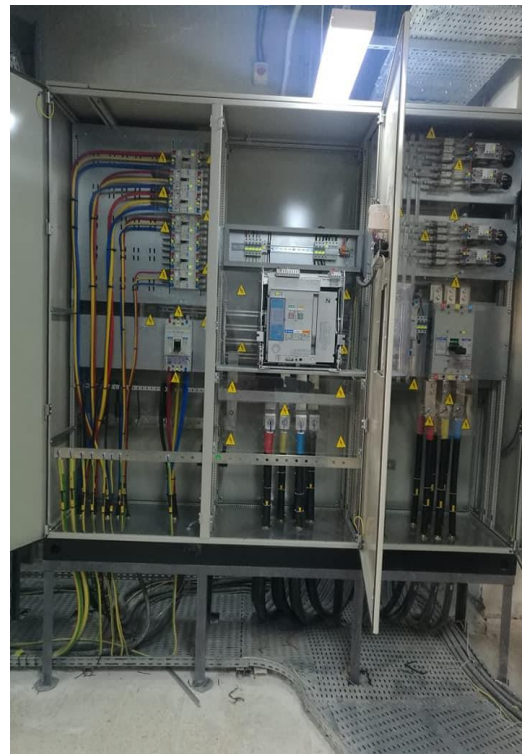
COMPLETED PROJECTS

**ASTPP 3 LPG SPHERES
EXTENSION.
COMPLETE E&I WORKS Q3-2021**

SCOPE

**ELECTRICAL & INSTRUMENTATION WORKS
FOR 3 LPG SPHERES, COMPLETE WITH
RACEWAYS, CABLING, EARTHING, CATHODIC
PROTECTION, F&GDS, CCTV & PA,
STRUCTURAL SUPPORTS FABRICATION AND
INSTRUMENTS CALIBRATION AND
NECESSARY.**





COMPLETED PROJECTS

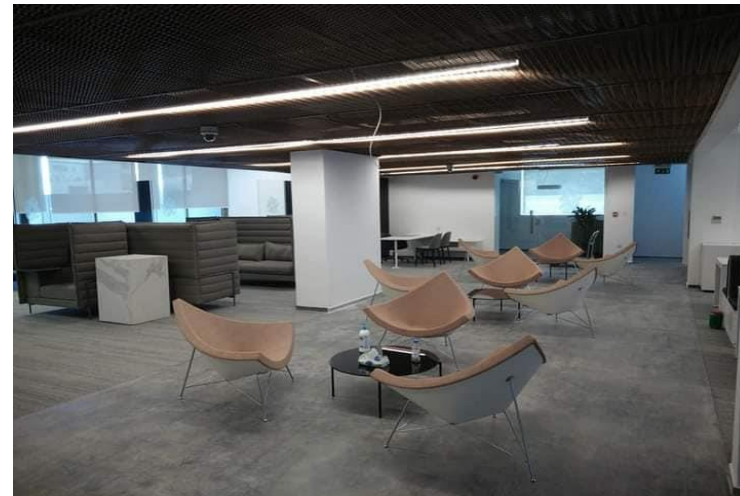
**AL-EMAN 200 BEDS HOSPITAL
MEP WORKS Q3-2021**



SCOPE

**ELECTROMECHANICAL WORKS, HVAC,
PLUMBING, MEDICAL GASES, BOILERS,
CHILLERS, PUMPS, OPERATION ROOMS,
GENERATORS, SANITIZERS, PIPING, BMS, ALL
LOW CURRENT SYSTEMS AND COMPLETE
MEP WORKS .**





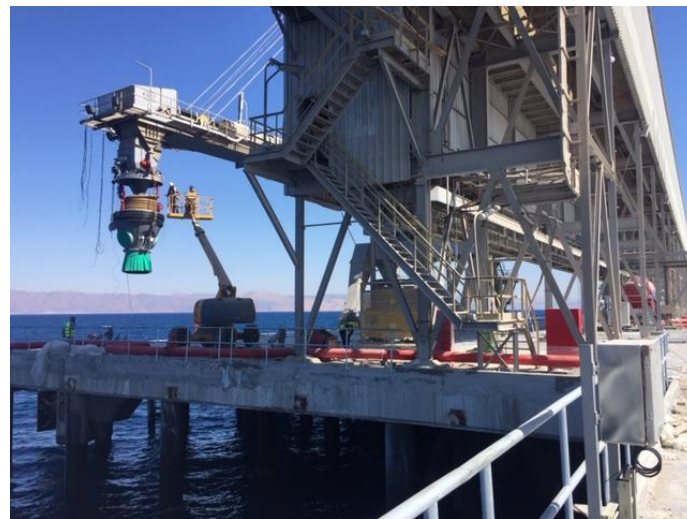
COMPLETED PROJECTS

SOLIDARITY HQ BUILDING Q2-2020

SCOPE

**ELECTROMECHANICAL WORKS, HVAC,
PLUMBING, PUMPS, GENERATORS, PIPING,
AUTOMATION, ALL LOW CURRENT SYSTEMS
AND COMPLETE MEP WORKS .**





COMPLETED PROJECTS

AQABA INDUSTRIAL PORTS Q1-2020

SCOPE

ELECTRICAL & INSTRUMENTATION WORKS
AND CATHODIC PROTECTION FOR
PHOSPHATE & POTASH JETTIES ALONG
WITH FIRE, LIGHTING AND LIGHTNING
SYSTEMS.





COMPLETED PROJECTS

ATTARAT POWER PLANT Q1-2020

SCOPE

INSTALLATION OF 18 NOS RAW WATER TRANSFER PUMPS COMPLETE WITH GRE PIPING, SUPPORTS, ELECTRICAL, INSTRUMENTATION AND EARTHING SYSTEM, IN ADDITION TO 1,275 M3 GRP MODULAR TYPE WATER TANK.

